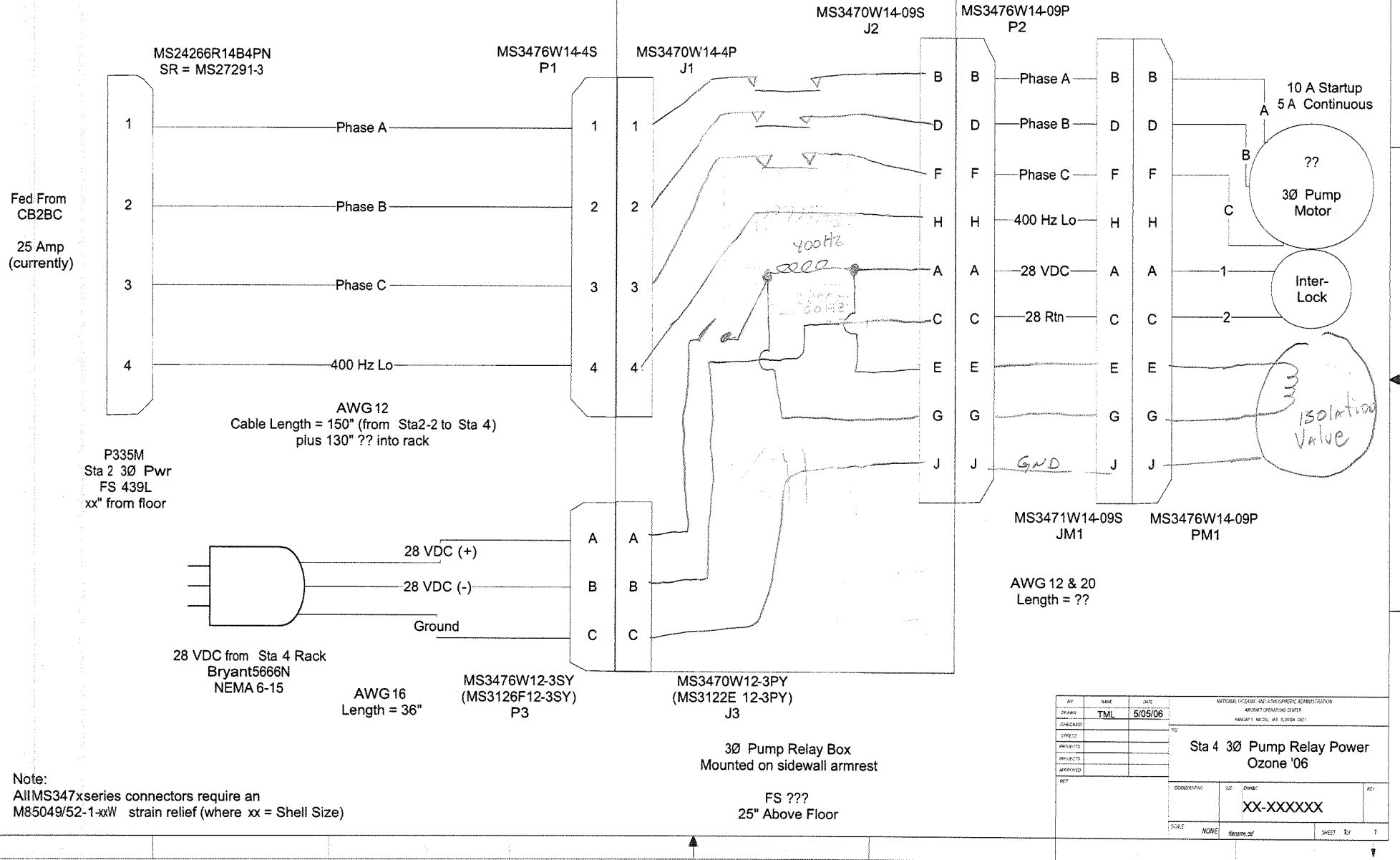


Bud Box Enc
#CU-3007-A
or Equivalent

Ref AOC Dwg# 430001-A
Mojo w Relay (28V control)
US 24376-D1
CH# 6042H145

Note:
Pins B D F H = #12
Pins A C E G J = #20



Note:
AllMS347xseries connectors require an
M85049/52-1-xxW strain relief (where xx = Shell Size)

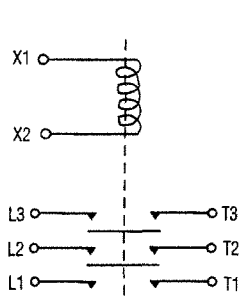
REV	DATE	BY	CHKD	DATE	NATIONAL OCEANOGRAPHIC ADMINISTRATION AIRCRAFT OPERATING CENTER NAVSUP 1 NUCOMC 454 (R) 12/2004 (REV)
DESIGN	TML			5/05/06	
CHECKED					
DRAWN					
APPROVED					
Sta 4 3Ø Pump Relay Power Ozone '06					SHEET 1 of 1

Intermittent Duty Ratings:

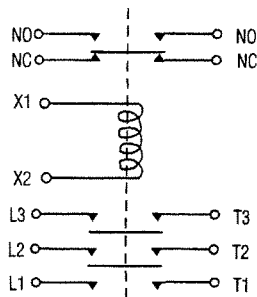
Continuous	15 Minutes	5 Minutes	1 Minute	Max. Inrush
100%	130%	150%	200%	600%

In general, these power relays can withstand the above intermittent duty over-current

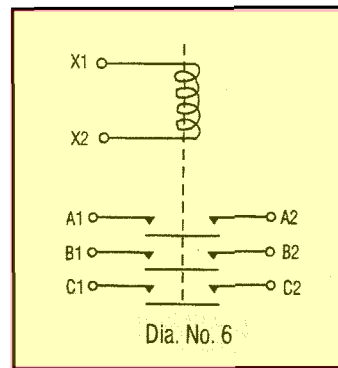
Typical Wiring Diagrams (See Selection Table for Diagram No. Reference)



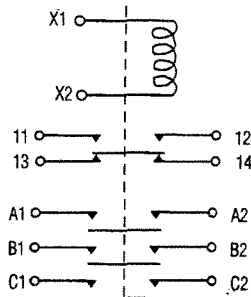
Dia. No. 1



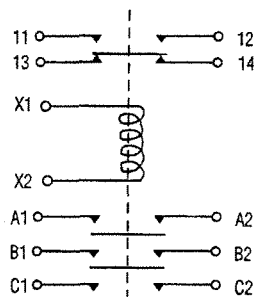
Dia. No. 2



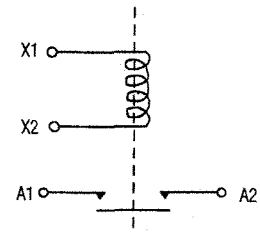
Dia. No. 6



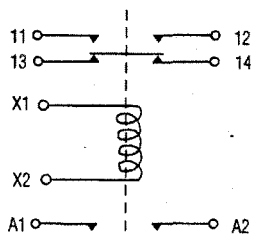
Dia. No. 7



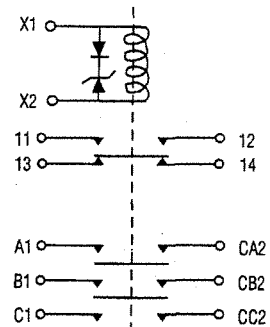
Dia. No. 8



Dia. No. 9



Dia. No. 10



Dia. No. 14

Ratings

Catalog Number	Mil-Spec Number	Power Contact Ratings – Cont. Duty 6/						Coil Data				
		28 Vdc			115/200 Vac 400 Hz			Max. Coil Power		Max. Volts Pick Up At Amb. Temp	Volts	
		Amperes			Amperes			Amps	Volts		Hold	Drop Out
		Res	Ind	Motor	Res	Ind	Motor					
6042H110	MS24143-D3	12	12	6	12	12	6	0.62	29 dc	18 dc	7 dc	1.5 dc
6042H91	MS27997-D1							0.64				
6042H92	MS27997-D2							0.64				
6042H141	MS24143-D1							0.62				
6042H142	MS24143-D2	25	25	25	25	25	25	0.62	124ac	90 ac	40 ac	10 ac
6042H290	MS24143-A3							0.225				
6042H291	MS24143-A4							0.225				
6042H45	---				50 4/	50 4/	35 4/	0.21				
6042H46	---							0.21				
6042H155	MS24140-D1				50 4/	50 4/	50 4/	0.50	29 dc	18 dc	7 dc	1.5 dc
6042H156	MS24140-D2							0.50				
6042H145	MS24376-D1							0.62				
6042H146	MS24376-D2							0.62				
6042H201	MS27222-1	50	50	50	50	50	50	0.65	29 dc	18 dc	7 dc	1.5 dc
6042H202	MS27222-2							0.65				
6042H147	MS24376-A1							0.15				
6042H148	MS24376-A2							0.15				
6042H285	MS24376-A4				33	33	20	0.225	124dc	90 ac	40 ac	10 ac
6042H288	MS24376-A3				50	50	50	0.60	29 dc	18 dc	7 dc	1.5 dc
SM50H10	MS27222-7							0.60				
6042H159	MS24141-D1							0.50	29 dc	18 dc	7 dc	1.5 dc
6042H160	MS24141-D2							0.50				
6042H166	MS24182-D1				100 4/	100 4/	75 4/	0.41				
6042H181	MS27242-1	100	100	100				0.65				
6042H182	MS27242-2							0.65				
6042H161	MS24168-D1				100	100	100	0.60				
6042H162	MS24168-D2							0.60				
6042H51	---				100	100	75	0.35				
6042H52	---				100	100	75	0.35	124ac			
6042H286	MS24168-A4	100	100	75	50	50	43	0.25	124ac			
6042H289	MS24168-A3				100	--	75	0.25	120ac			
6042H151	MS24142-D1							0.62	29 dc	18 dc	7 dc	1.5 dc
6042H152	MS24142-D2	200	100	200	200 4/	100 4/	150 4/	0.62				
6042H167	MS24183-D1							0.55				
6042H153	MS24184-D1				300 4/	100 4/	150 4/	0.62				
6042H154	MS24184-D2							0.62				
SM400H2	---				400 4/	---	150 4/	0.60				
SM400H3	---	400	100	250				0.60				

1/ Auxiliary switch: SPDT rated 28 Vdc and 115 V 400 Hz, 5 Amp Res. & Ind. & 0.75 Amp Lamp

2/ Rated 100,000 operations electrical and mechanical life. Auxiliary switch rated 1.25 Amp Res. & 0.75 Amp Ind

3/ Rated 50 g shock

4/ These ratings for 115 V 400 Hz

5/ See MS for details

6/ Intermittent duty ratings for general applications (See Chart on next page)

Selection Table

Catalog Number	Mil-Spec Number	Continuous Ampere Contact Rating	Poles and Throw	Operation Coil Voltage	No. Aux. Contacts 1/	Wiring Diagram Fig. Number	Temp Class Note	Term. Cover P/N	Term. Cover Mil-Spec Number	
6042H110	MS24143-D3	12	3PST	28 Vdc	1	8	B 2/	49-2661	MS27243-1	
6042H91	MS27997-D1	25			---	6	B 3/	49-3179	MS27243-6	
6042H92	MS27997-D2				1	7	B 3/	49-3179	MS27243-6	
6042H141	MS24143-D1				---	6	B	49-2661	MS27243-1	
6042H142	MS24143-D2				1	8	B	49-2661	MS27243-1	
6042H290	MS24143-A3				Built in rectifiers for 50, 60 or 400 Hertz	---	6	B	49-2661	MS27243-1
6042H291	MS24143-A4					1	8	B	49-2261	MS27243-1
6042H45	---	50	1PST	28 Vdc	---	9	B	---	---	
6042H46	---				1	10	B	---	---	
6042H155	MS24140-D1		---	9	B	49-2667	MS27243-3			
6042H156	MS24140-D2		1	10	B	49-2667	MS27243-3			
6042H145	MS24376-D1		---	6	B	49-2661	MS27243-1			
6042H146	MS24376-D2		1	8	B	49-2661	MS27243-1			
6042H201	MS27222-1	3PST	28 Vdc	---	6	B 3/	49-3179	MS27243-6		
6042H202	MS27222-2			1	7	B 3/	49-3179	MS27243-6		
6042H147	MS24376-A1			Built in rectifiers for 50, 60 or 400 Hertz	---	6	B	49-2661	MS27243-1	
6042H148	MS24376-A2				1	8	B	49-2661	MS27243-1	
6042H285	MS24376-A4				---	8	B	---	---	
6042H288	MS24376-A3			1	6	B	49-2661	MS27243-1		
SM50H10	MS27222-7			Suppressed Coil 28 Vdc	1	14	B	49-3179	MS27243-6	
6042H159	MS24141-D1	100	1PST	28 Vdc	---	9	B	49-2665	MS27243-2	
6042H160	MS24141-D2				1	10	B	49-2665	MS27243-2	
6042H166	MS24182-D1				---	9	D	49-2667	MS27243-3	
6042H181	MS27242-1				---	9	B	49-3424	---	
6042H182	MS27242-2				1	10	B	49-3424	---	
6042H161	MS24168-D1		3PST	Built in rectifiers for 50, 60 or 400 Hertz	---	6	B	49-2670	MS27243-4	
6042H162	MS24168-D2				1	8	B	49-2670	MS27243-4	
6042H51	---				---	1	B	---	---	
6042H52	---				1	2	B	---	---	
6042H286	MS24168-A4				1	8	B	49-2670	MS27243-4	
6042H289	MS24168-A3	---	6	B	49-2670	MS27243-4				
6042H151	MS24142-D1	200	1PST	28 Vdc	---	9	B	49-2672	MS27243-5	
6042H152	MS24142-D2				1	10	B	49-2672	MS27243-5	
6042H167	MS24183-D1				---	9	D	49-2665	MS27243-2	
6042H153	MS24184-D1	300	1PST	28 Vdc	---	9	D	49-2672	MS27243-5	
6042H154	MS24184-D2				1	10	D	49-2672	MS27243-5	
SM400H2	---	400	1PST	28 Vdc	---	9	D	49-2672	MS27243-5	
SM400H3	---				1	10	D	49-2672	MS27243-5	

Characteristics:

- Electrical Life: 50,000 cycles (sea level to 80,000 feet)
- Mechanical Life: 10,000 cycles
- Acceleration: 15 g's
- Shock: 25 g's
- Ambient Temperature Class:
 - B -70°C to 125°C
 - D -70°C to 71°C
- Hermetically sealed / MIL-R-6106
(Stainless Steel & Fused Glass)
- Twin Break Silver Alloy Main Contacts
- Vibration Levels (Typical):

5 – 10 CPS	10 – 55 CPS	55 – 200 CPS
.08 DA	.06 DA	10 g's
250 – 500 CPS	500 – 1500 CPS	
5 g's	3 g's	

