



Arctic Range at sunrise on way from FAI to SEA, looking west

Downtown Fairbanks close to sunset 4:30 PM, Temp -47°F, looking WNW over frozen Chena river



View from UAF southward at sunset ~4:30 PM  
in distance Alaska range ~120 miles away



# Items to be presented

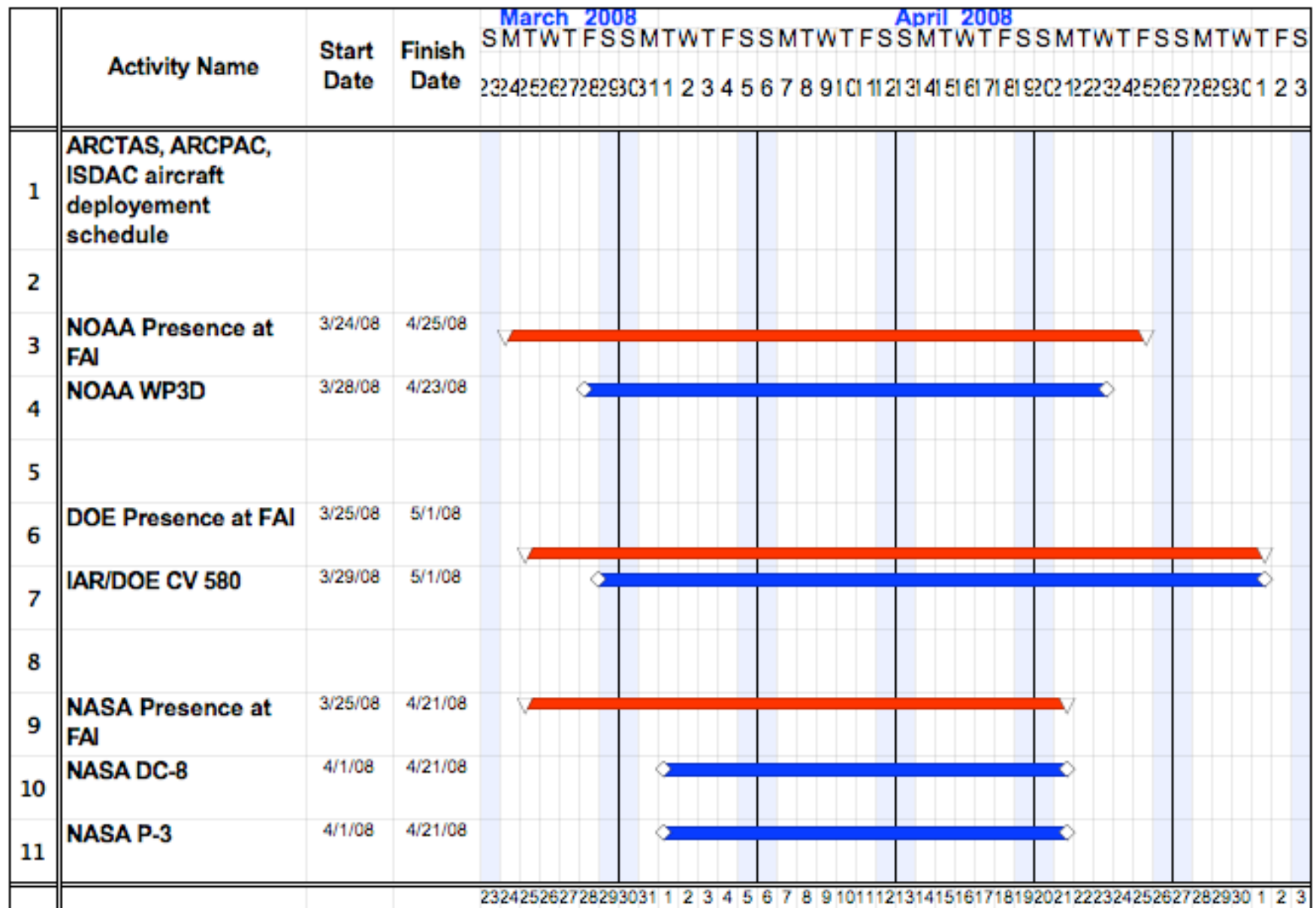
RMMA/Jeffco/NCAR RAF: access, hours

## Fairbanks

- Timing relative to other agencies
- Total body count: become a sardine?
- Actual weather, clothes
- Lay of the land: i.e. where not to go
- UAF facilities e.g. Rec Center
- GSE needs we know, any others?
- Shipping

## @ RMMA/Jeffco NCAR-RAF

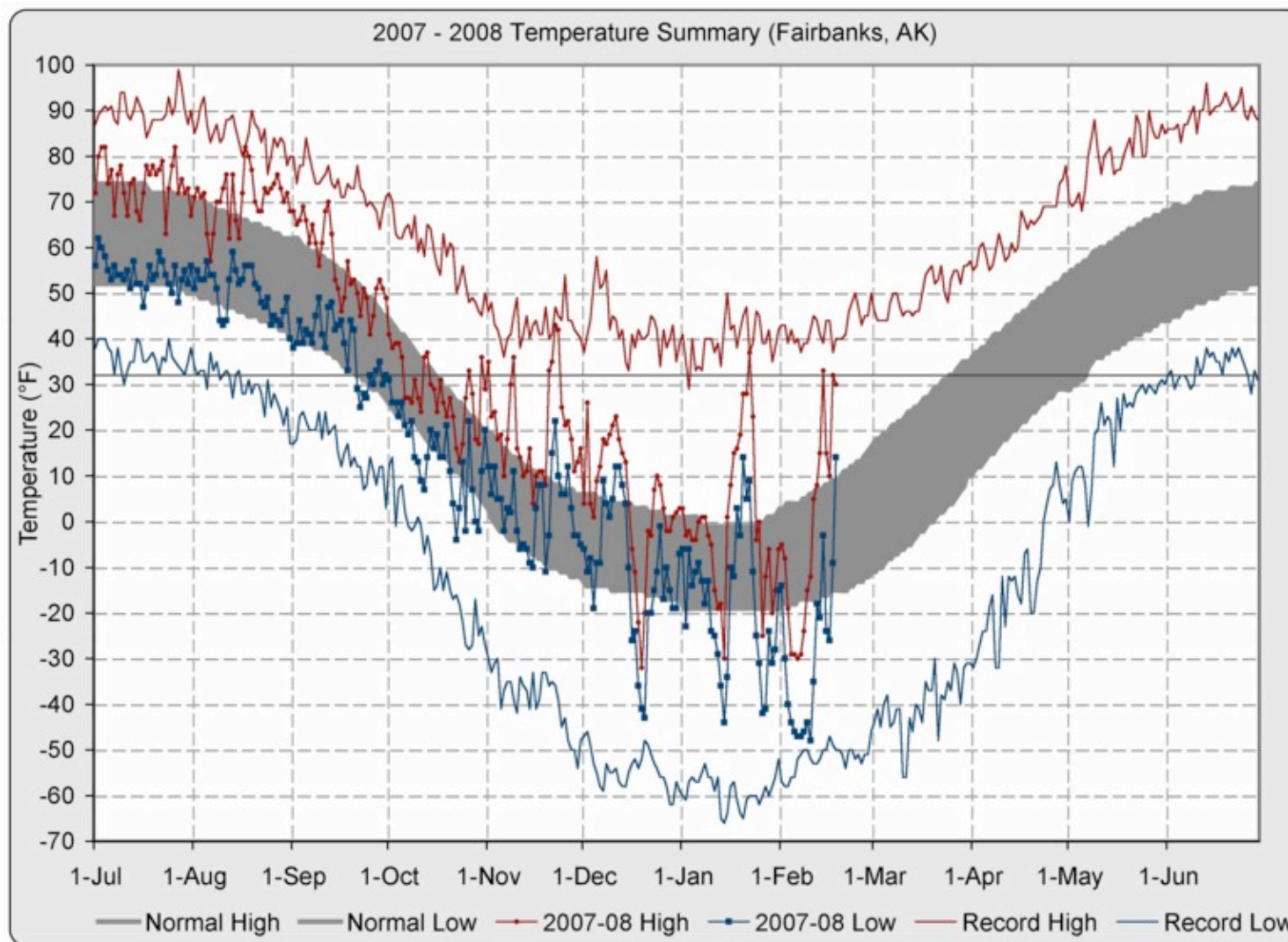
- Arrive 3/20 Thursday
- Depart 3/28 Friday
  
- No badging necessary
- Access avail. on Easter Saturday
- Group will get a few access cards
- Truck from AOC will unload here & DSRC
- Airfreight to FAI will leave from here



NASA B200 2 x 2 days begin of April -|- NASA media 1 day 4/13-16

# ARCPAC, ARCTAS & ISDAC

- Body count then (as of Oct 07)  
NOAA 35, NASA 55, DOE 25
- Body count now (as of last week)  
NOAA 35 + visitors  
NASA 100 out of 158  
DOE 35



[URL:http://climate.gi.alaska.edu/Climate/Fairbanks/index.html](http://climate.gi.alaska.edu/Climate/Fairbanks/index.html)

Snow cover: Oct - end of April

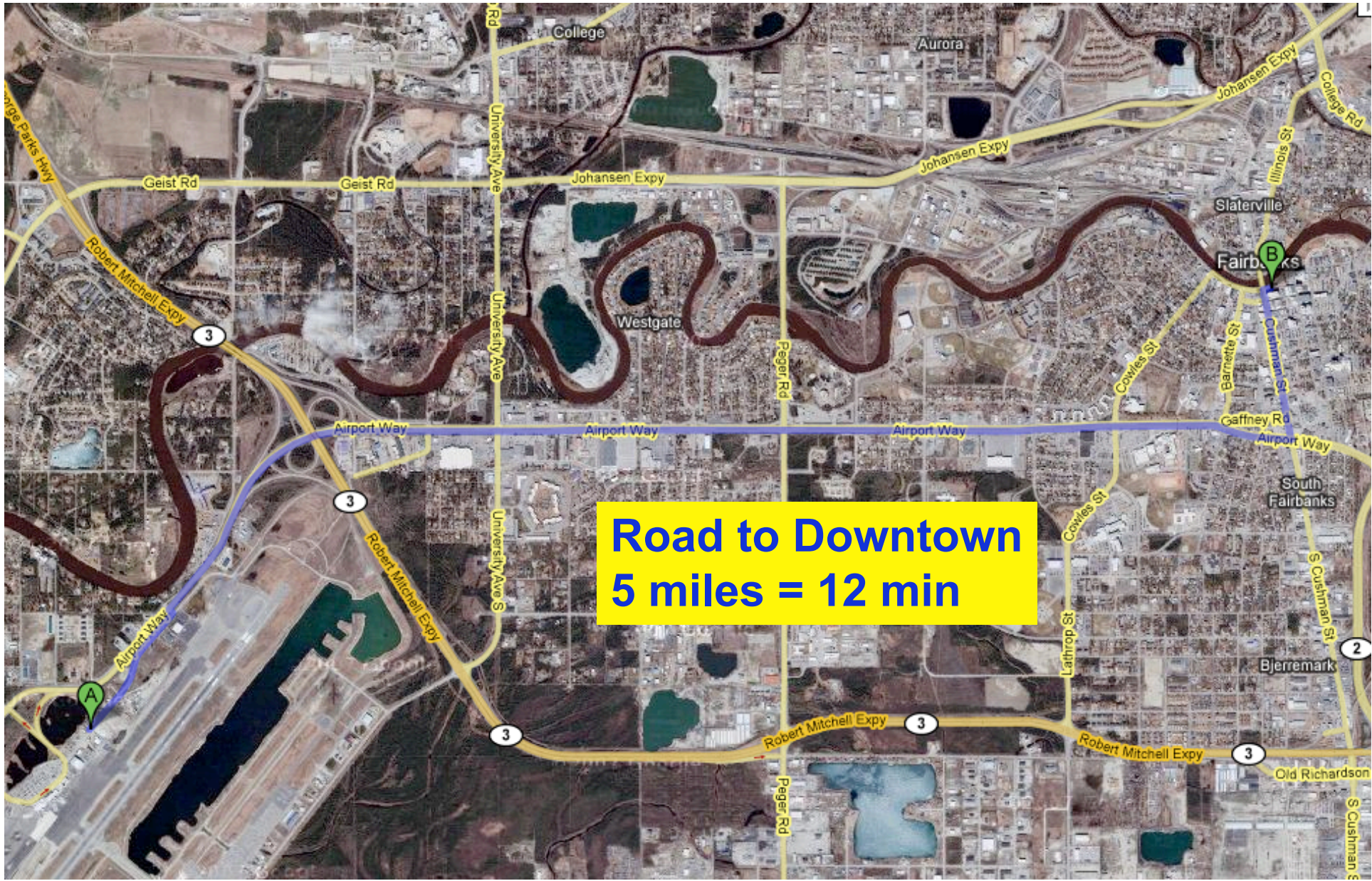
Clothes: usually dry, not windy, what shoes(?)







**Road to Sophie's Station  
2.2 miles = 5 min**



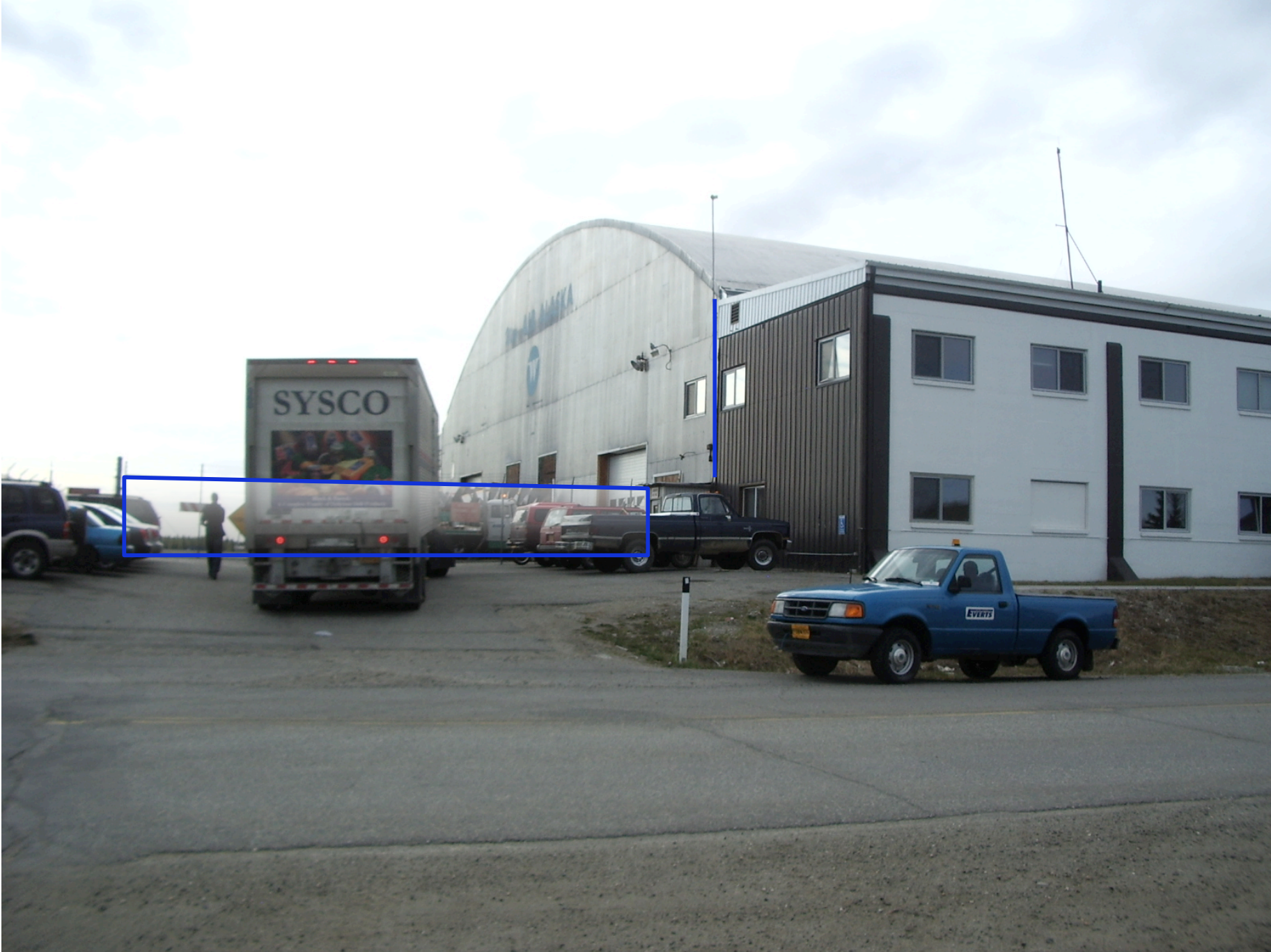
**Road to Downtown  
5 miles = 12 min**

## Fairbanks International Airport, Fairbanks, Alaska



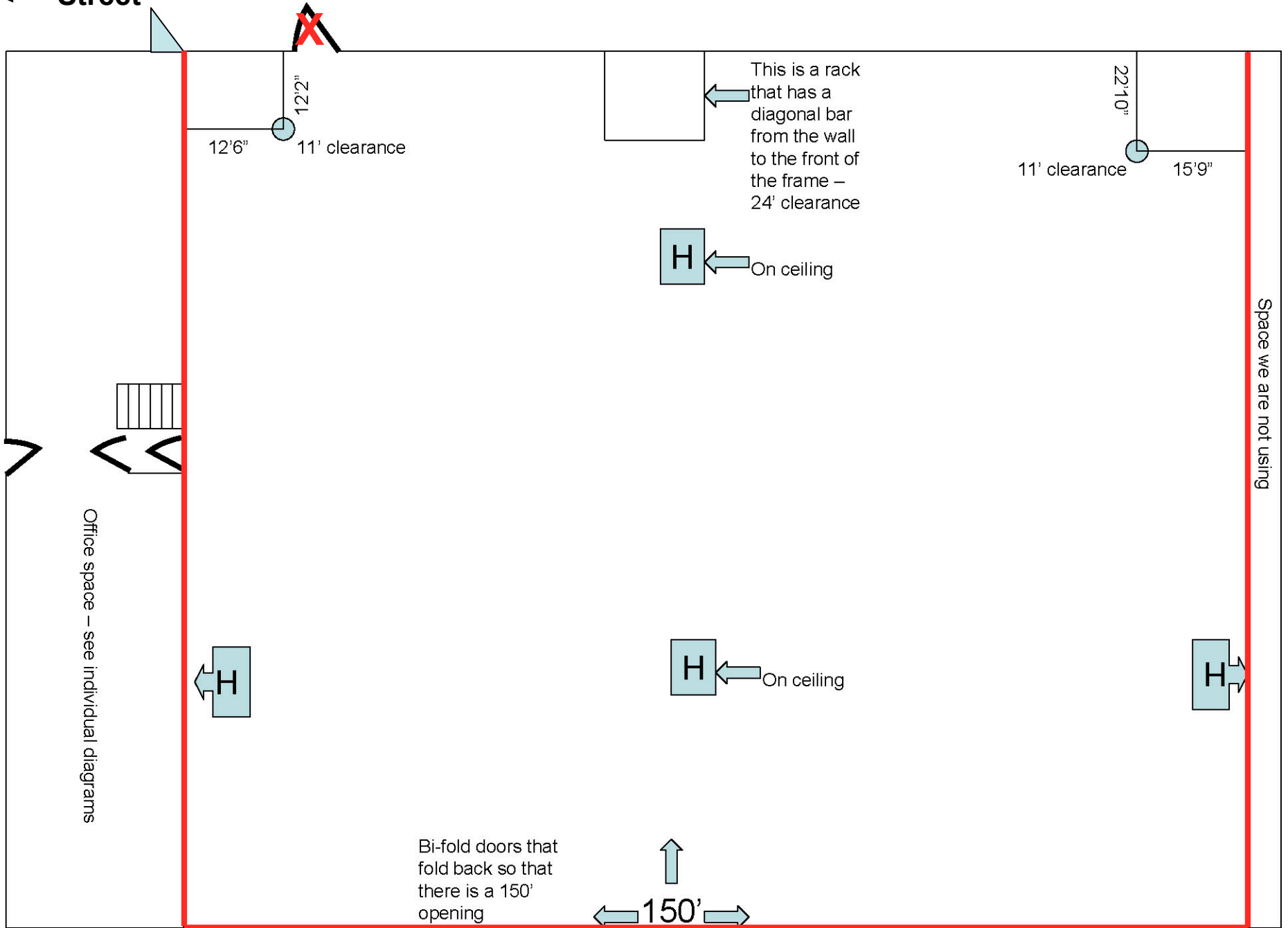
Green Line delineates secure area that can be entered with badge or escort; rest of the area within the airport perimeter fence requires different badge and is a **NO GO** Zone, never ever!

Red circle indicates the old Everts Air Fuel aircraft hangar. Office space is street-side of the whole hangar front



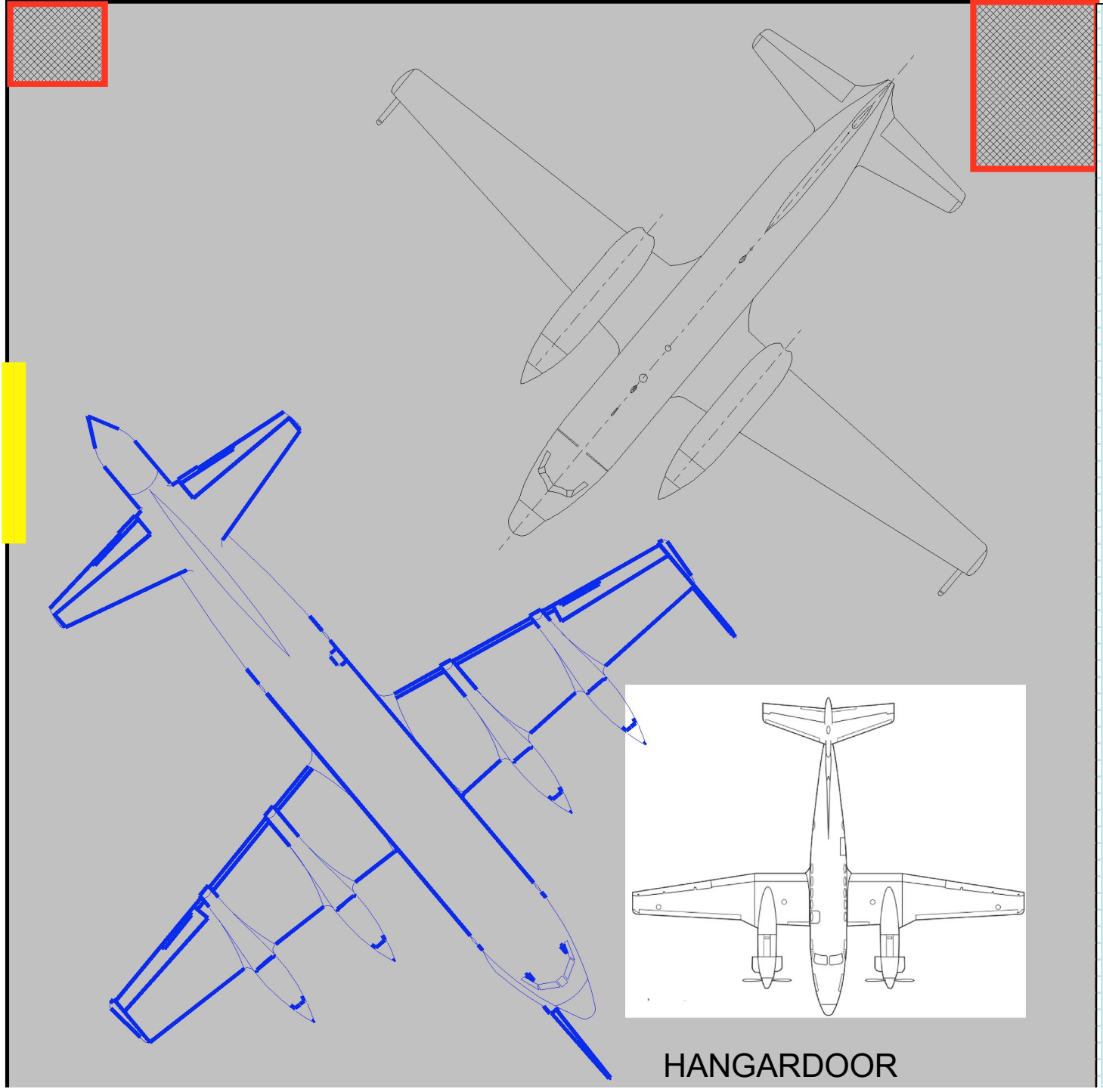


←== Street



Hangardoor Hangardoor Hangardoor Hangardoor

^ H E M R - H S ^ P C - T T O



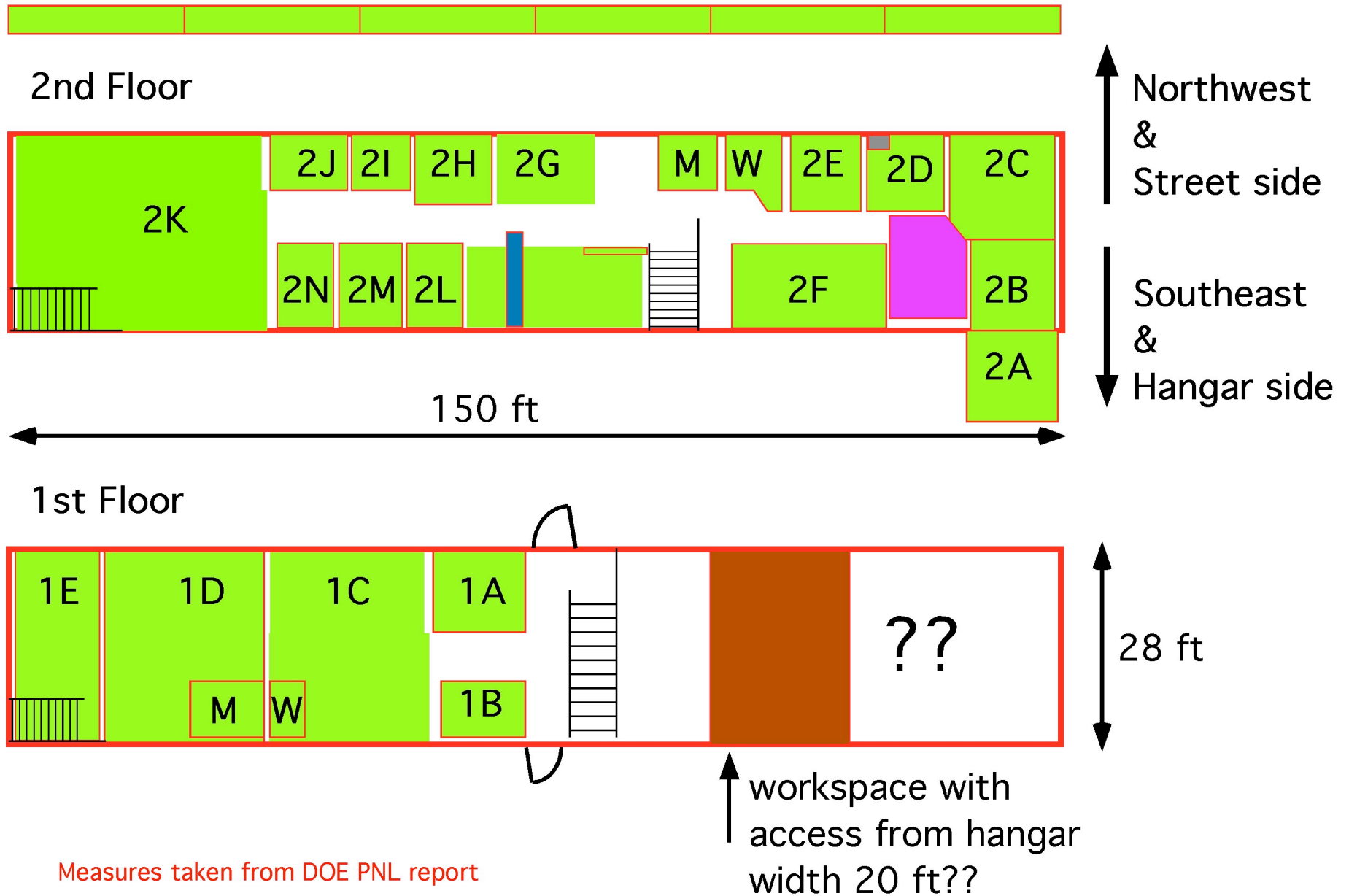
HANGARDOOR

N O N A C C E S S F O R U S





Building Length and Sections: 150 = 6 sections @ 25 ft







# GSE NEEDED AT FAI

ARCPAC Ground equipment Needs	Start Date	Stop Date	Length of use	Frequency
Forklift	3/24/08	4/23/08		for unloading/loading incoming freight: several hours
Forklift platform	3/28/08	4/23/08		before and after each flight
Knuckleboom	3/28/08	4/23/08		every other day, several hours
Ladder	3/28/08	4/23/08	6 AM - 6 PM	daily
B-Stand	3/28/08	4/23/08	6 AM - 6 PM	daily ? For how long?
Sissorlift	3/28/08	4/23/08		on 2 days in the mission for 2 hrs each
Other Workstand	3/28/08	4/23/08		
GPU	3/28/08	4/23/08	6 AM - 6 PM	daily: on flight days 4 hrs preflight
Tug - Large	3/28/08	4/23/08	30 min each	on flight days 2 x & on days when WP-3D needs to be moved to allow CV 580 ops
Clean Air Heater	3/28/08	4/23/08		on flight days 4 hours prior to takeoff, 2 hrs after landing?

**Surface: Truck via Alcan vs Truck and Roll on/Roll Off Ship**

**Have different transit time, risk & price, # of handlings**

**Air: FEDEX, UPS or Airfreight by Airline or Logistics Company**

**Various #'s of transfers**

**UPS Air Freight := UPS Supply Chain Solutions.**

**Max dim: 120" L, 84"W, 76"H.**

**Max weight per piece is 3000 lbs.**

**Rates based on 600 lbs/piece**

**1 day guaranteed to Fairbanks; not guaranteed**

**2 day guaranteed to Fairbanks; not guaranteed**

**3rd day service price is not much lower than the 2 day.**

**FedEx Express:**

**150 lbs priority overnight to Fairbanks**

**150 lbs 2 day service**

**No standard overnight service or 3 day service.**

**Max dim: 108" L, max 165" girth.  $(L+W \times 2 + H \times 2) = \text{girth}$ ; Max weight 150 lbs for express.**

**FedEx Air Freight:**

**No one day service. 1 day=2 day. 2 day=3 day.**

**Max dim: 119" L, 70" H**

**Max weight per piece: 2200 lbs**

**600 lbs 1 day (2 day guaranteed)**

**600 lbs 2 day (3 day guaranteed)**

**All air freight charged by dimensional weight.  $L \times W \times H / 166$ . No fuel surcharge @ FedEx due to US Gov. contract.**

**Fedex Express Freight:** no next day service to Fairbanks, 2nd day service only; about \$2.60 per lbs  
max weight: 2300 lbs per pallet  
max dim: 119" L - 80" W - 70" tall

**cost depends on overall size of shipment:**

**@8000 lbs pure weight**

**@400 lbs**

**light stuff goes by dimensional not true weight**

**Alaska Airlines: Denver to Fairbanks: No container service from DEN to SEA, but SEA – FAI via ANC**

**Various services:**

***GoldStreak Package Express:*** next-available-flight service items up to 100 lbs that need to be there today - guaranteed\*

***Priority Air Freight*** is for time-sensitive shipments that are larger than GoldStreak and need to be at a destination by a specific time - guaranteed\*

***General Air Freight*** is the lowest cost alternative for not time-sensitive shipments & can wait for space available. Target shipment arrival dates within 48 hours of acceptance.

**Max weight single piece 300 lbs (except GoldStreak: 100 lbs, exception to 350 lbs possible)**

**Max size 34" T x 42" W; Alaska Airlines offers 737 main deck "A - type" ULD container service between Seattle, Anchorage, and Fairbanks on freighter or combi**

**Cost: Goldstreak: @ ≤ 1 lb down to 1.40/lb @ ≥ 250 lbs; ≤100lbs; no single dim >70", L+H+W ≤ 90"**

**Priority: @ ≤ 1 lb down to 1.36/lb @ ≥ 250 lbs; || ≤ 300 lbs (< 350 lbs exception required)**

**General Freight: @ ≤ 1 lb down to 1.36/lb @ ≥ 250 lbs; || ≤ 34" T x 42" W x H??**

**UPS Next Day: More expensive than Fedex**

**Package up to 150 lbs; <165" length + girth, < 108" length**

**UPS Next Day Air,**

**UPS 2nd Day Air; BUT: no UPS 2nd Day Air Saver service to Fairbanks**

**UPS Air Freight or Express Freight (?)**

**< 3000 lbs; < 120" L - 83" W - 76" H**

**UPS Supply chain:**

**UPS Next Day Air Freight, really 2<sup>nd</sup> day**

**UPS 2nd Day Air Freight, delivered on 3rd**

**UPS 4-6 Day Air**

# SHIPPING

## Current Status:

- Sum DEN - AOC: 18000 lbs
- On AC: ? Lbs + crates = ??

## Declared for FAI:

- Surface: 7250 lbs (incomplete!)
- Air: 4511 lbs (incomplete??)
- Total: 11761 lbs (incomplete!)
  
- Prices all over: \$0.89/lb to \$5.90
  
- Under 150 lbs, Max dim: 108" L, max 165" girth. (L+Wx2+Hx2)  
=> *2nd day Fedex*
  
- Above 150 lbs: *stand by until Monday*



# Facilities at UAF

- NWS offices on campus
- Meeting rooms
- Auditorium
- Library
- Rec Center

# What did I forget?

## *Items to be presented:*

- Timing relative to other agencies
- Total body count: become a sardine?
- Actual weather, clothes
- Lay of the land: i.e. where not to go
- UAF Rec Center
- GSE needs we know, any others?
- Shipping

## *Forgotten:*

- IT at Everts
- Badging procedures & status

THANKS