

NOAA WP-3 SENEX 2013

Test flights at MacDill

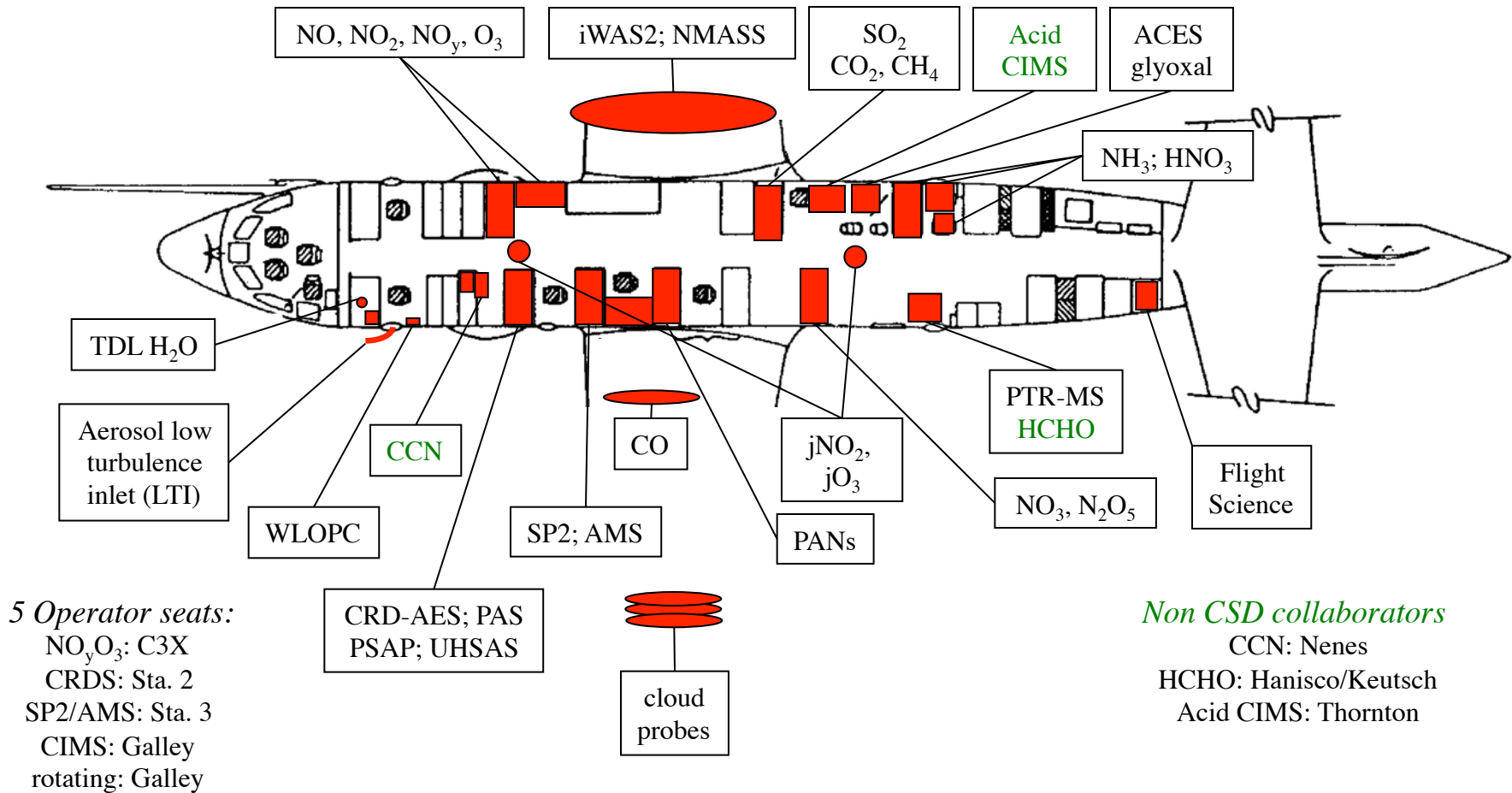
<http://esrl.noaa.gov/csd/projects/senex/>

SENEX integration finished

- Very smooth 4 weeks
- All instruments loaded: almost 7900 lbs
- All instruments power and safety checked
- HazMat procedures in place
- Configuration Control Team in progress

Thanks to everybody !!!!
Special thanks to the AOC team !!!!

N42RF payload installed - SENEX 2013



2-page instrument descriptions available on the website









Schedule for 125 flight hours 6 weeks

MAY 2013

SENEX INTEGRATION SCHEDULE V6



| MONDAY | TUESDAY | WEDNESDAY | THURSDAY | FRIDAY | SATURDAY | SUNDAY | |
|--|---|---|--|---|------------|-----------------------------|---|
| | | 1 | 2 | 3 | 4 | 5 | |
| Sta.7+LIPF Sta.C3X Sta. 6a FliSci | Sta.7+LIPF Sta.C3X Sta. 6a FliSci | Sta.7+LIPF Sta.C3X Sta. 6a FliSci | Sta.7+LIPF Sta.C3X Sta. 6a FliSci | Sta.7+LIPF Sta.C3X Sta. 6a FliSci | | | Fed: Ryerson other: Lee, Lopez-Hilfiker CIRES:Neuman, Nowak, Pollack, Aikin |
| 6 | 7 | 8 | 9 | 10 | 11 | 12 | |
| Sta. 3 Sta. 5 CO pod J-heads CCN | Sta. 3 Sta. 5 CO pod J-heads CCN | Sta. 3 Sta. 5 CO pod J-heads CCN | Sta. 3 Sta. 5 CO pod J-heads CCN | Sta. 3 Sta. 5 CO pod J-heads CCN | | | Fed: Middlebrook FN: Bougiatioti, Liao, Markovic CIRES: Holloway, Peischl, Lin, Schwarz |
| 13 | 14 | 15 | 16 | 17 | 18 | 19 | |
| Sta. 4 Sta. 6b Dual Pass. | Sta. 4 Sta. 6b Dual Pass. | Sta. 4 Sta. 6b Dual Pass. | Sta. 4 Sta. 6b Dual Pass. HAZMAT inspect | Sta. 4 Sta. 6b Dual Pass. HAZMAT inspect | | | Fed: Brown, Roberts FN: Min, Edwards CIRES: Dube, Veres |
| 20 | 21 | 22 | 23 | 24 | 25 | 26 | |
| AOC prep CCT func. test flight GC to Nashville | AOC prep CCT func. test flight | AOC prep CCT func. test flight | AOC prep CCT func. test flight | AOC prep CCT func. test flight truck to Nashville | | | |
| 27 | 28 | 29 | 30 | 31 | | | |
| Memorial Day | Power checks and science flight | Power checks and science flight | Power checks and science flight | Power checks and science flight | access day | access day truck loading | |
| | | NOTES: | | | | | |

May 20-24: AOC prep, functional test flight
May 28-30: Power checks and science test flight

Schedule for 125 flight hours 6 weeks

JUNE 2013

SENEX INTEGRATION
SCHEDULE V6



| MONDAY | TUESDAY | WEDNESDAY | THURSDAY | FRIDAY | SATURDAY | SUNDAY |
|---------------------------------------|---------------------------------|---------------------------------|---------------------------------|---------------------------------|------------|--------------------------|
| | | | | | 1 | 2 |
| Memorial Day | Power checks and science flight | Power checks and science flight | Power checks and science flight | Power checks and science flight | access day | access day truck loading |
| 3 | 4 | 5 | 6 | 7 | 8 | 9 |
| Transit/Truck from Tampa to Nashville | Nashville | Nashville | Nashville | Nashville | Nashville | Nashville |
| 10 | 11 | 12 | 13 | 14 | 15 | 16 |
| Nashville | Nashville | Nashville | Nashville | Nashville | Nashville | Nashville |
| 17 | 18 | 19 | 20 | 21 | 22 | 23 |
| Nashville | Nashville | Nashville | Nashville | Nashville | Nashville | Nashville |
| 24 | 25 | 26 | 27 | 28 | 29 | 30 |
| Nashville | Nashville | Nashville | Nashville | Nashville | Nashville | Nashville |
| | | NOTES: | | | | |

June 1-2: access days

June 3: Transit to Nashville

Schedule for 125 flight hours 6 weeks

JULY 2013

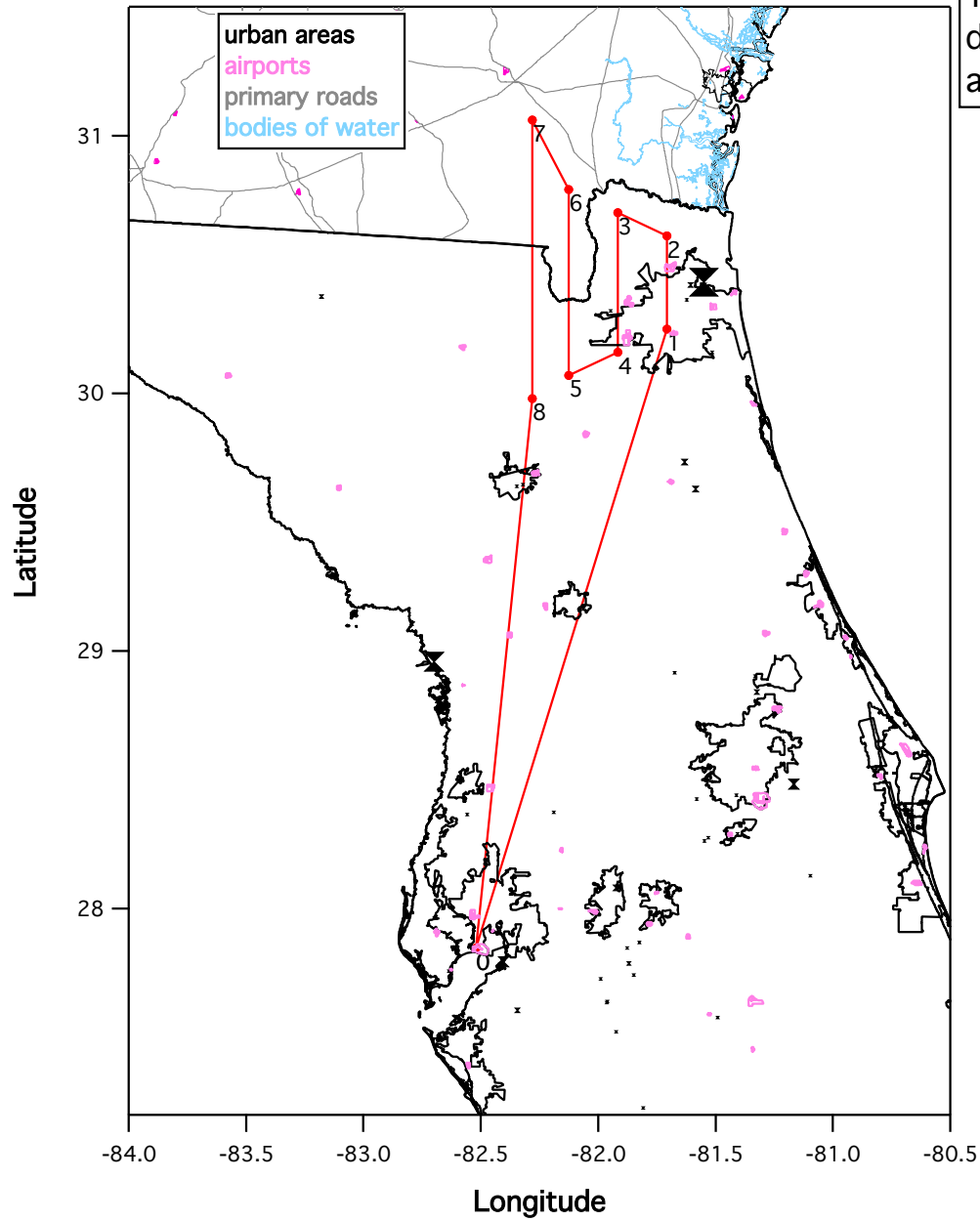
SENEX INTEGRATION
SCHEDULE V6



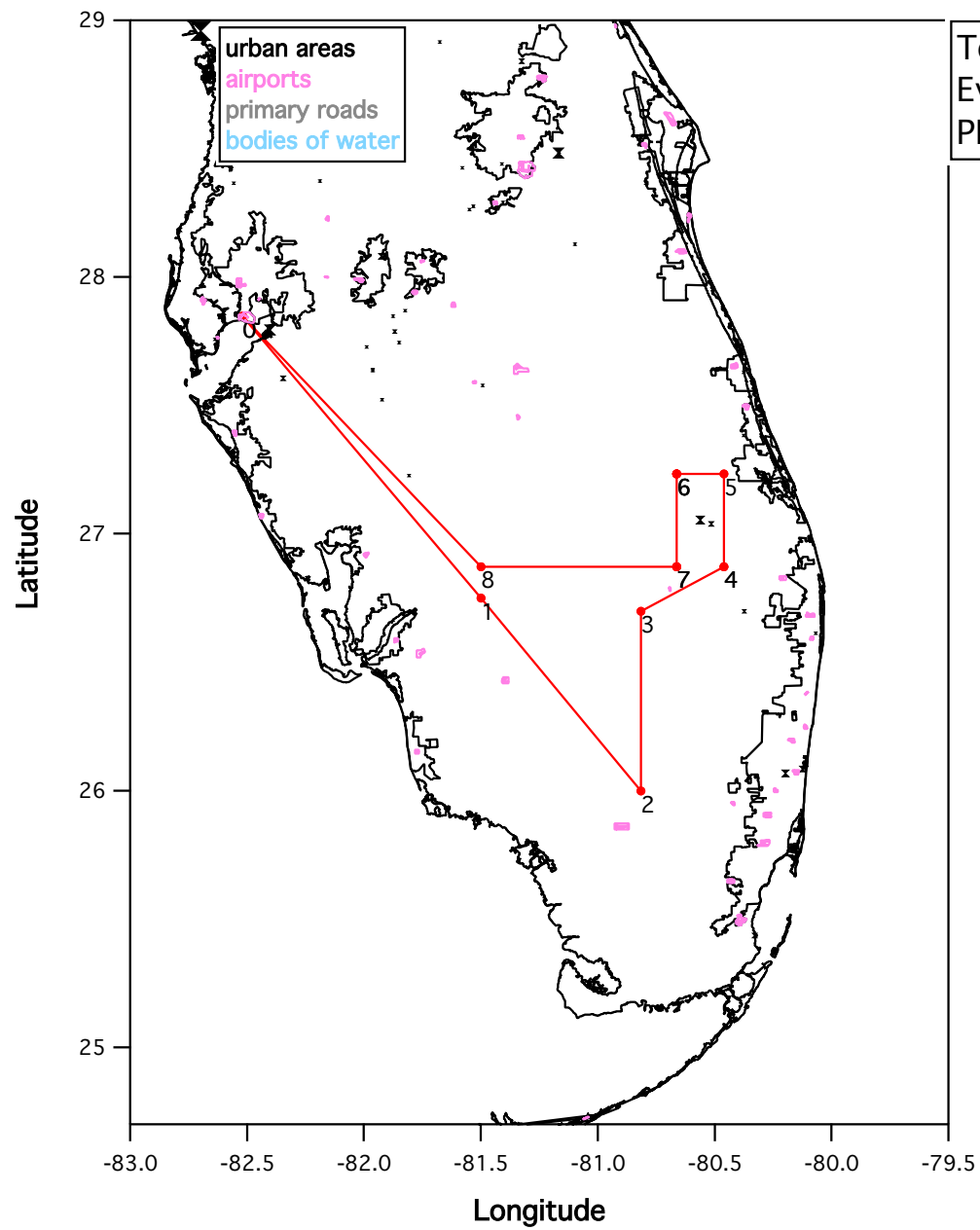
| MONDAY | TUESDAY | WEDNESDAY | THURSDAY | FRIDAY | SATURDAY | SUNDAY |
|--|----------------------------------|----------------------------------|--|-----------------|-----------------|-----------------|
| 1 Nashville | 2 Nashville | 3 Nashville | 4 Nashville | 5 Nashville | 6 Nashville | 7 Nashville |
| 8 Nashville | 9 Nashville | 10 Nashville | 11 Nashville | 12 Nashville | 13 Nashville | 14 Nashville |
| 15 Transit to Tampa Truck to Tampa | 16 de-integration in Tampa | 17 de-integration in Tampa | 18 packing and loading Truck to Boulder | 19 | 20 | 21 |
| 22 | 23 | 24 | 25 | 26 | 27 | 28 |
| 29 | 30 | 31 | | | | |
| <p><u>July 15:</u> transit to Tampa</p> <p><u>July 16-17:</u> de-integration</p> <p><u>July 18:</u> truck to Boulder</p> <p><u>July 22:</u> unload truck go to the Rio</p> | | | | | | |

Test flight week May 28 - June 3

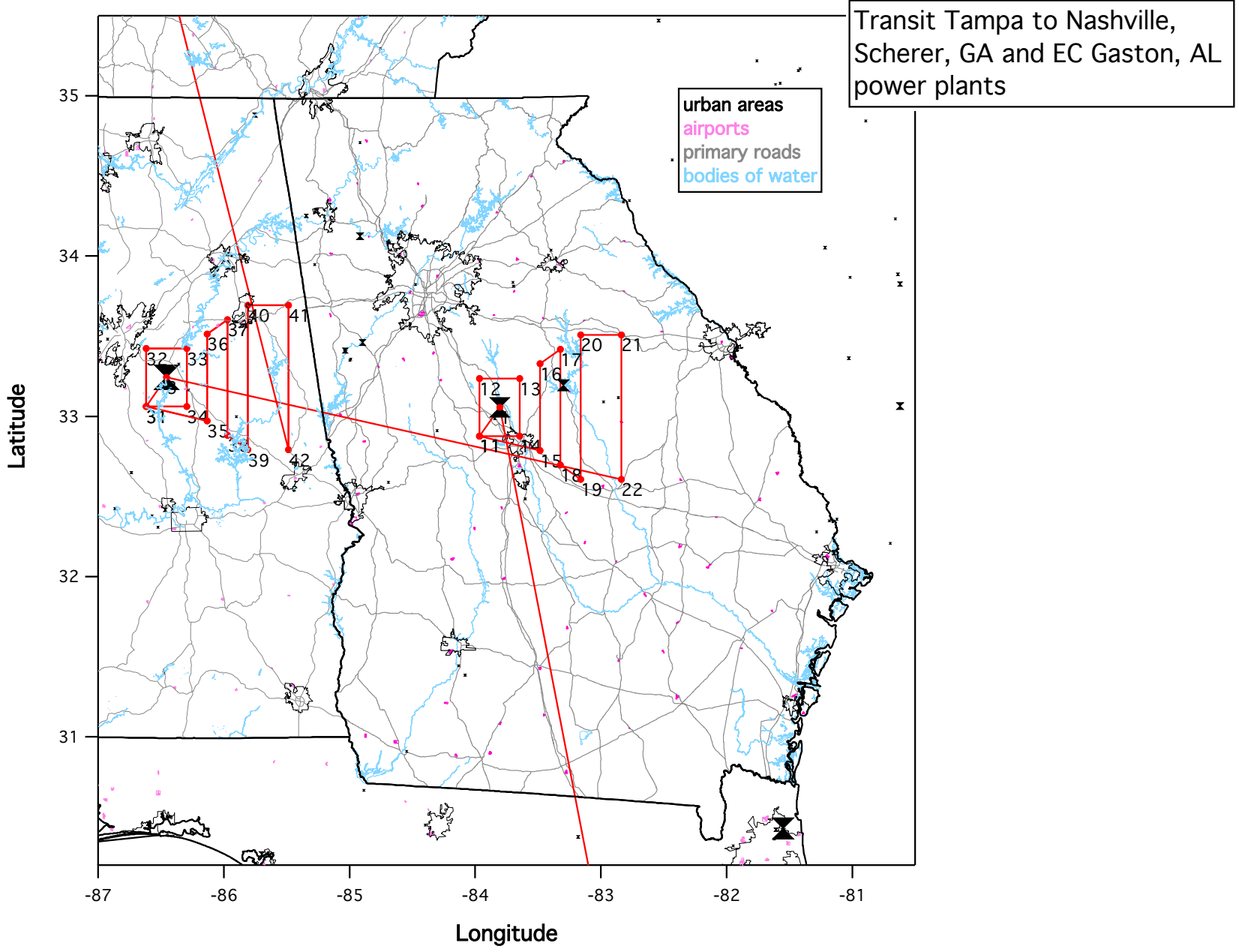
- Tool control continues: **NO EXCEPTIONS**
 - Lots of people: need to share tools
 - Only specialty tools allowed: marked and inventoried
- Test instruments on Tuesday May 28
 - Resolve last issues on various instruments
 - Power check with all instruments running
- First test flight as early as Wednesday May 29
 - try science goal in Florida
 - Expect long pre-flight
 - Seats will be assigned according to instrument issues
- Second test flight on Friday May 31
- Access days over the weekend
 - Get last instrument issues resolved
 - Packing for the truck
- Transit on Monday June 3: full science mission



Test Flight, EtoW
downwind of Jacksonville
across Okefenokee NWR



Test Flight,
Everglades &
PP at Lake Okeechobee



Transit Tampa to Nashville,
Scherer, GA and EC Gaston, AL
power plants

urban areas
airports
primary roads
bodies of water

Latitude

Longitude

Shipping to Smyrna

- Truck from Boulder to Smyrna: May 24 (Joost)
 - Personal items okay, but within reason: we are worried about overful truck from Smyrna back to Boulder
- Truck from Tampa to Smyrna: June 3 (Carsten)
 - June 3 after P3 leaves
 - HazMat info the same as Boulder Tampa (minus what is on P3)
 - Load truck June 2 and finish after take-off

Inlet covers

If you have a cover on your inlet or a streamer that needs to be removed before the functional test flight

Let me know today !!!!

Nashville and Smyrna

Satellite
Traffic



Nashville International Airport

Smyrna Rutherford County Airport

2 mi
5 km

Smyrna Air Center

Airport Authority Building

Hangar 621
NSF C-130
& NOAA WP-3D

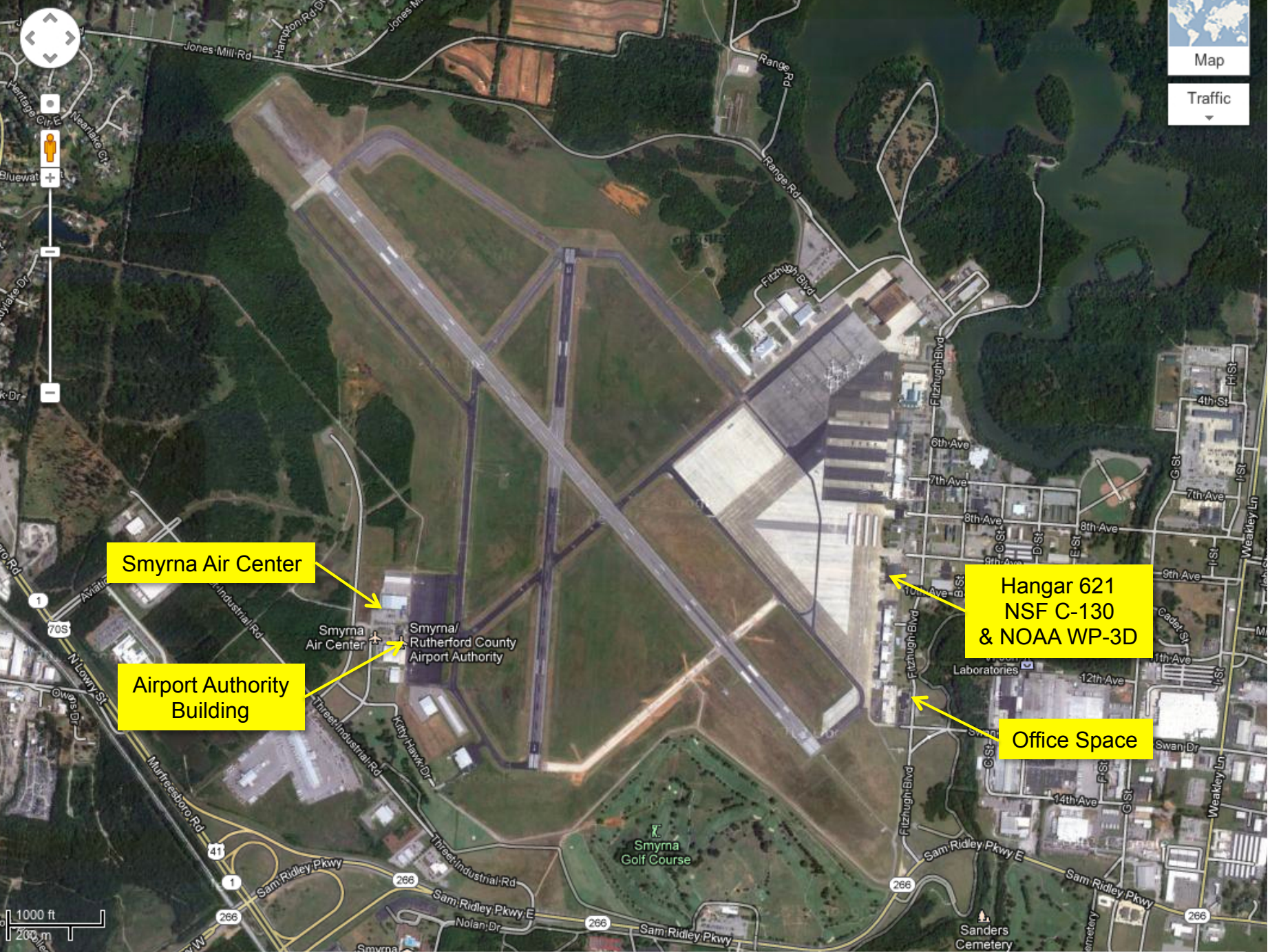
Office Space

Smyrna Air Center
Smyrna/
Rutherford County
Airport Authority

Smyrna
Golf Course

Laboratories

Sanders
Cemetery



1000 ft
200 m



Hangar Space:
2000 sq ft floor space

621 Fitzhugh Blvd.

Access: lockbox with key

Forklift available upon request





Office Space:

2500 sq ft

<5 min walk from hangar 621

Suite 116, 661 Fitzhugh Blvd

Access: contractor badge
(after hours) and keypad



Security and Badging at Smyrna Airport

- Limited group of people will be given contractor badges: open gates to SIDA and door to office building (after hours)
- CAC cards and NOAA badges will be accepted as valid forms of ID. Wear them visibly inside the SIDA
- Non-CAC card or NOAA ID holders: need to make name tag. Send me and Debe Fisher a passport photo asap
- We have provided a list of all participants (<http://tinyurl.com/SENEXpeople>). Let me know of any changes. If you are not on the list, the airport cannot verify you belong to the project
- Need to watch a safety and security slide presentation: May 21 at noon in room 2A305. Other opportunities at MacDill or in Smyrna.

- Security requirements are straightforward to deal with
- Do comply with all the rules and be a responsible guest

Safety at Smyrna Airport

- We need to provide a list of hazmat and MSDSs
- I will compile these from hazmat lists for Boulder – Smyrna and Tampa – Smyrna trucks
- Let me know of any direct shipments to Smyrna this week and during the project

Lodging

Alert! Alert! Alert!

Country Music Festival - June 6-9:

Large demand for hotel rooms and rental cars

If you haven't booked travel for this period, do it now



Smyrna airport

Stoneridge Farms Apartments:
11 people

Verandas Apartments
8 people

Hotel Row: rest of the group
Hilton Garden Inn (NCAR)
Hampton Inn & Suites (NCAR)
La Quinta Inn & Suites
Comfort Suites
Holiday Inn Express

Other

- Communication:
 - SENEX e-mail list
 - Add your contact, travel and emergency info to:
<http://tinyurl.com/SENEXpeople>
 - x-Chat between NOAA WP-3D and ground
 - Weekly, brief science meetings
 - Google+ between SENEX and other SAS projects
- Media day / open house
 - Friday June 21
 - Coordinated with other SAS projects
 - Program in progress

Questions?